

LD型1~20t电动单梁桥式起重机

LD type 1~20t of electric single-beam bridge crane

LD型1-20吨电动单梁起重机具有结构合理，整机刚性强的特点。整机与CD1型、MD1、HC型电动葫芦配套使用，是一种轻小型的起重机械。其起重量为1t-20t。跨度为7.5-31.5m，工作级别为A3，工作温度为-25℃-40℃。

本产品广泛用于工厂、仓库、料场等不同场合吊运货物，禁止在易燃、易爆腐蚀性介质环境中使用。

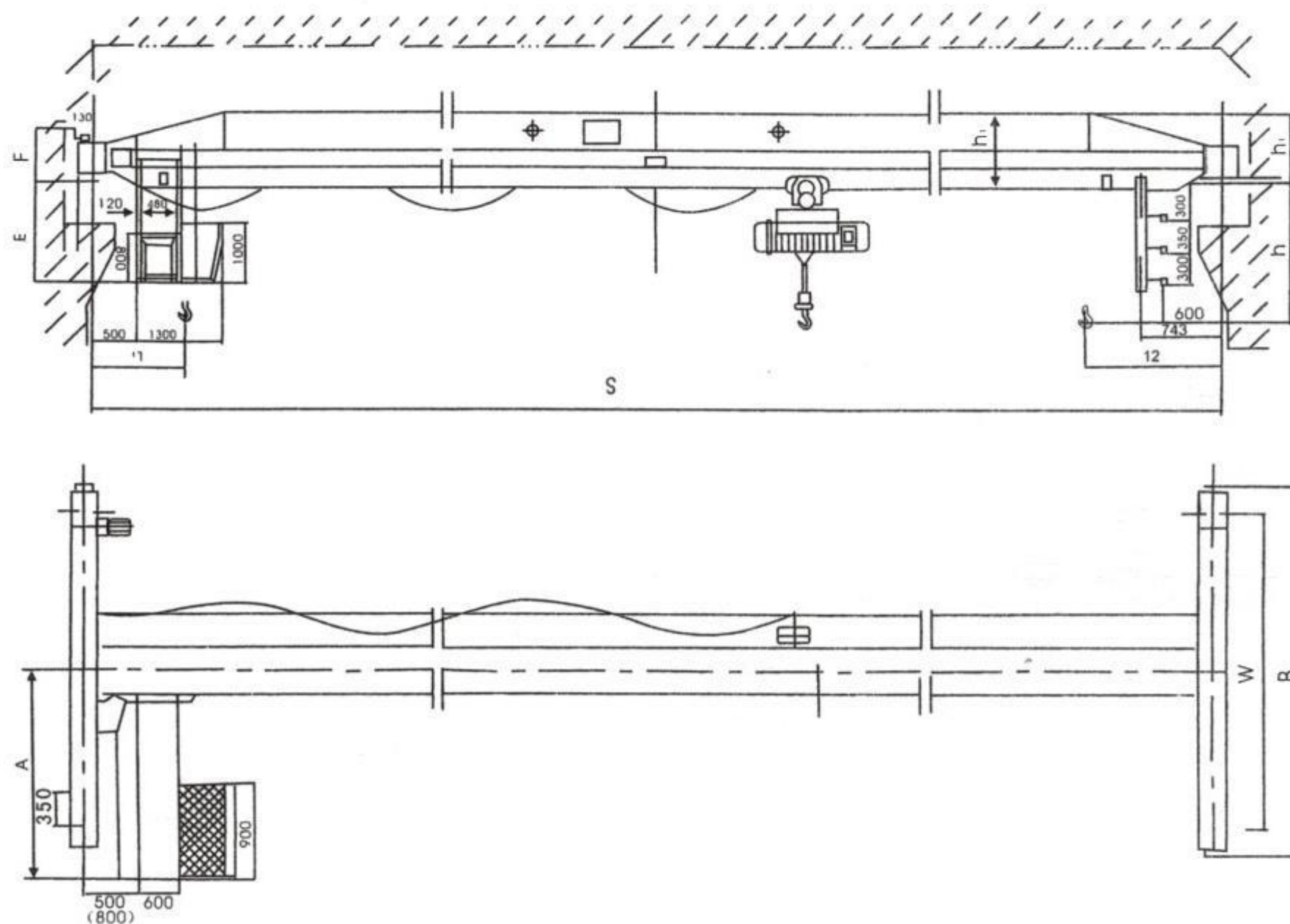
本产品设有地面和操纵室两种操作形式。操纵室有开式、闭式两种，可根据实际情况分为左或右安装两种形式，入门方向有侧面及端面两种，以满足用户在各种不同需要的情况下进行选择。

LD model single beam motor crane is improved and designed on the basis of LD model .it is characterized by more reasonable structure and higher steel as a whole .used together with CD1 model,MD1 model electric hoist as a complete set,it is light duty crane with a capacity of 1 to 10 tons .the span is 7.5-31.5m .working grade is A3 .working temperature is -25℃to 40℃.

This product is widely used in plants ,warehouses ,and material stocks to lift goods.it is prohibited to use the equipment in the combustible,explosives environment.

This product has two operational methods,ground or operational room which has open model and closed model and can be installed on left or right side according to practical situation .And the direction of entering the gate has two forms ,sideway and ends in order to satisfy the users choice under different conditions.

外形尺寸图 Outer size Diagram



本样本所提供重量为设计值，制造值为±5-15%。

LD型1~10t电动单梁桥式起重机

LD type 1~10t of electric single-beam bridge crane

技术规格 Technical specifications

起重机 运行机构 Crane travelling mechanism	运动速度m/min working speed	(地) 20 ground	(地) 30 ground	(空地) 45 room ground	(空) 60 room ground	(空) 75 room ground	
	减速比 decelerate speed rate	58.78	39.38	26.36	19.37	15.88	
	电动机 Motor	型号 type	YSE802-4			YSE90L-4	
		功率 power kw	2×0.8			2×1.5	
转速 (r/min)rotational speed		1200					
起升机构 Lifting mechanism (electric hoist)& electric hoist travelling mechanism	电动葫芦型式 electric hoist CD1 MD1	CD1型		MD1型			
	起升速度 V1 (m/min)Lifting speed	8 (7)		8/0.8 (7/0.7)			
	起升高度 H (m)Lifting height	6 9 12 18 24 30					
	运行速度 V2 (m/min)Moving speed	20; 30					
	电动机 Motor	锥形鼠笼型 cone squirrel-cage model					
工作制度 Working system	A3						
电源 Power	3相 three-phase 380v 50Hz						
车轮直径 Wheel diameter	φ270mm						
轨道面宽 Width of trail	37-70mm						
A	1550 (1-5吨和10吨7.5<LK≤16.5时用尺寸) 1770 (10吨16.5<LK≤22.5时用尺寸)						
E	1880						
F	520 (1-5吨动作尺寸) 584 (3-5吨17.5<LK≤22.5 10吨7.5<LK≤16.5动作尺寸) 634 (10吨 16.5<LK≤22.5)						

起重量t Lifting weight	跨度m Span	起重机总重 (t) Total weight		最大轮压 (t) Max.wheel pressure		最小轮压 (t) Min.wheel pressure		基本尺寸 (mm) Basic size						
		地操 ground operation	空操 air operation	地操 ground operation	空操 air operation	地操 ground operation	空操 air operation	h ₁	B	w	l ₁	l ₂	h	H ₁
1	7.5	1.65	2.05	1.08	1.38	0.40	0.40	550	2000	1500	796	1274	810	490
	8	1.69	2.09	1.09	1.39	0.41	0.41							
	8.5	1.74	2.14	1.10	1.4	0.42	0.42							
	9	1.79	2.19	1.12	1.42	0.44	0.44							
	9.5	1.83	2.23	1.13	1.43	0.45	0.45							
	10	1.88	2.28	1.14	1.44	0.46	0.46							
	10.5	1.92	2.32	1.15	1.45	0.47	0.47							
	11	1.97	2.37	1.16	1.46	0.48	0.48							
	11.5	2.00	2.40	1.17	1.47	0.49	0.49							
	12	2.06	2.46	1.18	1.48	0.50	0.50							
	12.5	2.15	2.55	1.21	1.51	0.53	0.53							
	13	2.20	2.60	1.23	1.53	0.55	0.55							
	13.5	2.24	2.64	1.24	1.54	0.56	0.56							
	14	2.29	2.69	1.25	1.55	0.57	0.57							
	14.5	2.42	2.82	1.28	1.58	0.60	0.60							
	15	2.47	2.87	1.30	1.60	0.62	0.62							
	15.5	2.52	2.92	1.31	1.61	0.63	0.63							
	16	2.57	2.97	1.32	1.62	0.64	0.64							
	16.5	2.62	3.02	1.33	1.63	0.65	0.65							
	17	2.67	3.07	1.35	1.65	0.67	0.67							
	19.5	3.00	3.40	1.44	1.74	0.76	0.76	650					870	530
	22.5	3.41	3.81	1.54	1.84	0.86	0.86	700	3500	3000			870	580
	25.5	4.44	4.84	1.65	1.95	1.05	1.05	800	4000	3500			890	660
	28.5	5.68	6.08	1.96	2.26	1.36	1.36	900					905	745
	31.5	6.78	7.18	2.24	2.54	1.64	1.64	1000	4500	4000			930	820



LD型1~10t电动单梁桥式起重机

LD type 1~10t of electric single-beam bridge crane

技术规格 Technical specifications

2	7.5	1.78	2.18	1.64	1.94	0.4	0.4	580	2000	1500	871.5	1292.5	1000	490				
	8	1.82	2.22	1.65	1.95	0.41	0.41											
	8.5	1.86	2.26	1.66	1.96	0.42	0.42											
	9	1.92	2.32	1.68	1.98	0.44	0.44											
	9.5	1.96	2.36	1.69	1.99	0.45	0.45											
	10	2	2.4	1.7	2	0.46	0.46											
	10.5	2.05	2.45	1.71	2.01	0.47	0.47											
	11	2.1	2.5	1.72	2.02	0.48	0.48											
	11.5	2.21	2.61	1.75	2.05	0.51	0.51											
	12	2.26	2.66	1.76	2.06	0.52	0.52											
	12.5	2.35	2.75	1.79	2.09	0.55	0.55											
	13	2.4	2.8	1.81	2.11	0.57	0.57											
	13.5	2.45	2.85	1.82	2.12	0.58	0.58											
	14	2.5	2.9	1.83	2.13	0.59	0.59											
	14.5	2.63	3.03	1.87	2.17	0.63	0.63											
	15	2.64	3.09	1.88	2.18	0.64	0.64											
	15.5	2.74	3.14	1.89	2.19	0.65	0.65											
	16	2.8	3.2	1.91	2.21	0.67	0.67											
	16.5	2.85	3.25	1.92	2.22	0.68	0.68											
	17	2.91	3.51	1.93	2.23	0.69	0.69											
19.5	3.85	4.25	2.18	2.48	0.94	0.94	800	3500	3000	818.5	1291	1080	660					
22.5	4.67	5.07	2.38	2.68	1.14	1.14	880					4000	3500	1120	725			
25.5	5.86	6.26	2.5	2.8	1.15	1.54	980					4000	3500	1130	835			
28.5	7.05	7.45	2.81	3.11	1.68	1.68	1100					4500	4000	1175	880			
31.5	7.96	8.36	3.04	3.14	1.91	1.91												
3	7.5	1.88	2.28	2.15	2.45	0.41	0.41					650	2000	1500	818.5	1291	1150	530
	8	1.93	2.33	2.16	2.46	0.42	0.42											
	8.5	1.98	2.38	2.18	2.48	0.44	0.44											
	9	2.03	2.43	2.19	2.49	0.45	0.45											
	9.5	2.08	2.48	2.2	2.5	0.46	0.46											
	10	2.13	2.53	2.22	2.52	0.48	0.48											
	10.5	2.18	2.58	2.23	2.53	0.49	0.49											
	11	2.24	2.64	2.24	2.54	0.5	0.5											
	11.5	2.32	2.72	2.25	2.56	0.52	0.52											
	12	2.38	2.78	2.28	2.58	0.54	0.54											
	12.5	2.47	2.87	2.31	2.61	0.57	0.57											
	13	2.53	2.93	2.32	2.62	0.58	0.58											
	13.5	2.59	2.99	2.34	2.64	0.6	0.6											
	14	2.64	3.04	2.35	2.65	0.61	0.61											
	14.5	3.17	3.57	2.48	2.78	0.74	0.74											
	15	3.25	3.65	2.5	2.8	0.76	0.76											
	15.5	3.31	3.71	2.52	2.82	0.78	0.78											
	16	3.38	3.78	2.54	2.84	0.8	0.8											
	16.5	3.45	3.85	2.55	2.85	0.81	0.81											
	17	3.53	3.93	2.57	2.87	0.83	0.83											
19.5	4.28	4.68	2.8	3.1	1.06	1.06	880	3500	3000	818.5	1291	1170	660					
22.5	4.83	5.23	2.94	3.24	1.2	1.2	980					4000	3500	1185	725			
25.5	6.2	6.6	3.08	3.38	1.47	1.47	1050					4000	3500	1210	820			
28.5	7.31	7.71	3.36	3.66	1.74	1.74	1150							1275	880			
31.5	8.71	9.11	3.72	4.02	2.09	2.09										1220	1275	940
5	7.5	2.14	2.54	3.28	3.58	0.42	0.42					720	4500	4000	841.5	1310	1303	580
	8	2.2	2.6	3.29	3.59	0.43	0.43											
	8.5	2.25	2.65	3.3	3.6	0.44	0.44											
	9	2.31	2.71	3.32	3.62	0.46	0.46											
	9.5	2.37	2.77	3.33	3.63	0.47	0.47											
	10	2.42	2.82	3.35	3.65	0.49	0.49											
	10.5	2.48	2.88	3.36	3.66	0.5	0.5											
	11	2.51	2.91	3.37	3.67	0.51	0.51											
	11.5	2.95	3.35	3.48	3.78	0.62	0.62											
	12	3.02	3.42	3.5	3.8	0.64	0.64											
	12.5	3.12	3.52	3.53	3.83	0.67	0.67											
	13	3.21	3.61	3.55	3.85	0.69	0.69											
	13.5	3.27	3.67	3.57	3.87	0.71	0.71											
	14	3.34	3.74	3.59	3.89	0.73	0.73											
5	7.5	2.14	2.54	3.28	3.58	0.42	0.42					800	2000	1500	841.5	1310	1332	660
	8	2.2	2.6	3.29	3.59	0.43	0.43											
	8.5	2.25	2.65	3.3	3.6	0.44	0.44											
	9	2.31	2.71	3.32	3.62	0.46	0.46											
	9.5	2.37	2.77	3.33	3.63	0.47	0.47											
	10	2.42	2.82	3.35	3.65	0.49	0.49											
	10.5	2.48	2.88	3.36	3.66	0.5	0.5											
	11	2.51	2.91	3.37	3.67	0.51	0.51											
	11.5	2.95	3.35	3.48	3.78	0.62	0.62											
	12	3.02	3.42	3.5	3.8	0.64	0.64											
	12.5	3.12	3.52	3.53	3.83	0.67	0.67											
	13	3.21	3.61	3.55	3.85	0.69	0.69											
	13.5	3.27	3.67	3.57	3.87	0.71	0.71											
	14	3.34	3.74	3.59	3.89	0.73	0.73											

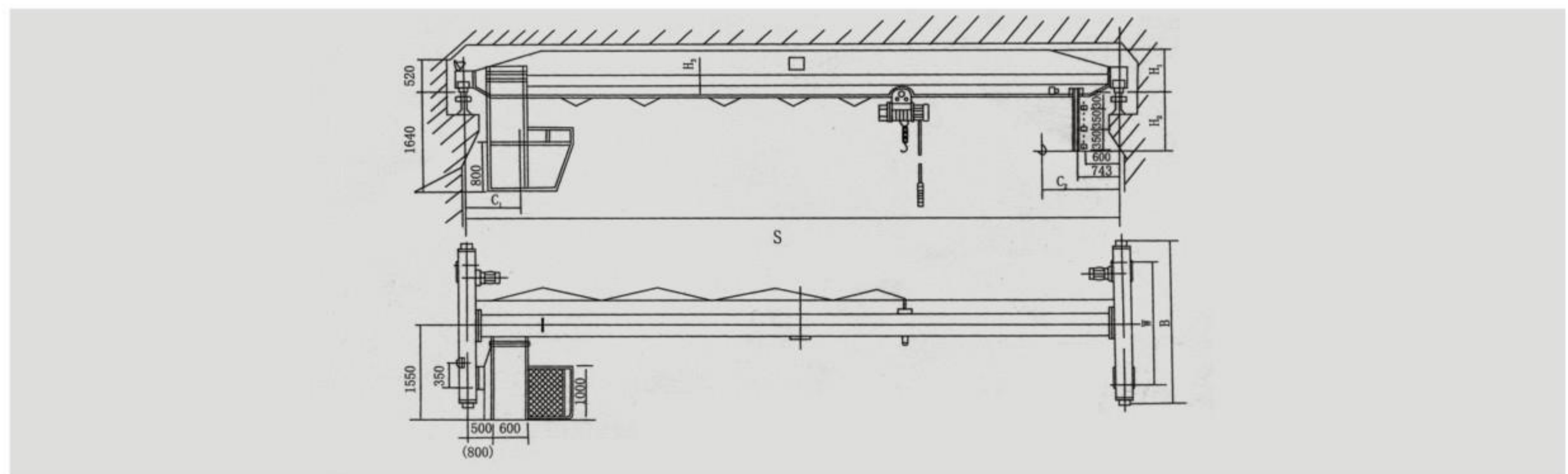


LD型1~10t电动单梁桥式起重机

LD type 1~10t of electric single-beam bridge crane

技术规格 Technical specifications

起重量t Lifting weight	跨度m Span	起重机总重 (t) Total weight		最大轮压 (t) Max.wheel pressure		最小轮压 (t) Min.wheel pressure		基本尺寸 (mm) Basic size									
		地操 ground operation	空操 air operation	地操 ground operation	空操 air operation	地操 ground operation	空操 air operation	h1	B	w	l1	l2	h	H1			
5	14.5	3.44	4.04	3.68	3.98	0.82	0.82	950	3000	2500	841.5	1310	1388	745			
	15	3.53	4.13	3.7	4	0.84	0.84										
	15.5	3.61	4.21	3.72	4.02	0.86	0.86										
	16	3.69	4.29	3.74	4.04	0.88	0.88										
	16.5	3.76	4.36	3.76	4.06	0.9	0.9										
	17	3.84	4.44	3.78	4.08	0.92	0.92										
	19.5	4.57	4.97	3.93	4.23	1.07	1.07						980	3500	3000	1363	835
	22.5	5.65	6.05	4.07	4.37	1.34	1.34						1050				
	25.5	6.51	6.91	4.16	4.46	1.51	1.51						1150				
	28.5	8.17	8.57	4.58	4.88	1.92	1.92						1220				
31.5	8.96	9.46	4.79	5.19	2.12	2.12	1260	4500	4000	1458	1050						
10	7.5	2.87	3.47	5.1	5.4	0.44	0.44	880	2000	1500	1235	1935	1470	735			
	8	2.95	3.55	5.2	5.5	0.46	0.46										
	8.5	3.02	3.62	5.27	5.57	0.48	0.48										
	9	3.1	3.7	5.34	5.67	0.51	0.51										
	9.5	3.17	3.77	5.37	5.7	0.53	0.53										
	10	3.24	3.84	5.46	5.76	0.55	0.55										
	10.5	3.4	4	5.53	5.83	0.57	0.57										
	11	3.46	4.08	5.57	5.87	0.6	0.6										
	11.5	3.7	4.3	5.66	5.96	0.66	0.66										
	12	3.79	4.39	5.71	6.01	0.68	0.68										
	12.5	3.87	4.47	5.75	6.05	0.7	0.7										
	13	3.95	4.55	5.79	6.09	0.73	0.73										
	13.5	4.1	4.7	5.85	6.15	0.76	0.76										
	14	4.5	4.76	5.97	6.27	0.78	0.78										
	14.5	4.6	5.2	6.01	6.31	0.87	0.87										
	15	4.7	5.3	6.06	6.36	0.9	0.9										
	15.5	4.8	5.4	6.09	6.39	0.93	0.93										
	16	4.9	5.5	6.14	6.44	0.95	0.95										
	16.5	5	5.6	6.17	6.47	0.98	0.98										
	17	5.1	5.7	6.2	6.5	1	1										
19.5	5.7	6.3	6.41	6.71	1.27	1.27	1150	3500	3000	1515	880						
22.5	7	7.6	6.79	7.09	1.55	1.55	1250										
25.5	8.68	9.08	7.15	7.45	1.94	1.94	1300										
28.5	11.15	11.55	7.78	8.1	2.56	2.56	1400										
31.5	12.64	13.04	8.19	8.49	2.93	2.93	1500					4500	4000	1600	1100		
															1620	1130	
															1650	1200	



LX型0.5~10t电动单梁悬挂桥式起重机

LX type 0.5 to 10 t electric single-girder suspension bridge crane

LX型电动单梁悬挂起重机与CD₁、MD₁型电动葫芦配套使用，成为一种有轨运行的轻小型起重机。用于机械、装配及仓库等场所。本产品为地面操作。工作环境温度-20℃-40℃，禁止在易燃、易爆及腐蚀性强的介质环境中工作。

LX mode single Beam Suspension motor crane and CD₁、MD₁ model electric hoist are used together as a complete set .It is a light duty tarrk traveling crane with trajectory which applies to and used at machinery assembling sites and warehouse.this product adopt s ground controlling and works at a temperature of -20℃ to 40℃ .It is prohibited to use the equipment at combustibile , explosive or corrosive environment.

技术规格 Technical specifications

起重量 Capacity(t)		0.5, 1, 2, 3, 5, 10		
跨度 Span		3~22.5		
起重机运行机构 Crane travelling mechanism		运行速度 Traveling speed		
		20 m/min		
		电动机 Motor	0.5~3t 3~22.5m	ZDY12-4/0.4kW × 2 n=1380r/min
			5t 3~16m	
5t 16~22.5m	ZDY21-4/0.8kW × 2 n=1380r/min			
起升机构 Lifting mechanism	类型 Model		CD ₁ /MD ₁	
	电动葫芦 Electric hoist	起升速度 Lifting speed	0.5/5t	8, 0.8/8
			10t	7, 0.7/7
	起升高度 Lifting height(m)		6; 9; 12; 18; 24; 30	
	运行机构 Travelling mechanism	运行速度 Travelling speed	20 m/min	
		电动机 Motor	锥形转子电机 Taper type Rotor motor	
工作制度 Working system		A3		
电源 Power		三相交流 three-phase AC380V 50Hz		
吨位,跨度 (capacity,span)		车轮直径 (wheel diameter)	适应轨道面 (width of trail)	
0.5~3t, 3~22.5m; 5t, 3~16m		φ 134	I20a-I32c	
5t, 16~22.5m; 10t, 3~16m		φ 154	I32b-I45c	
10t, 16~22.5m		φ 154	I40b-I63c	

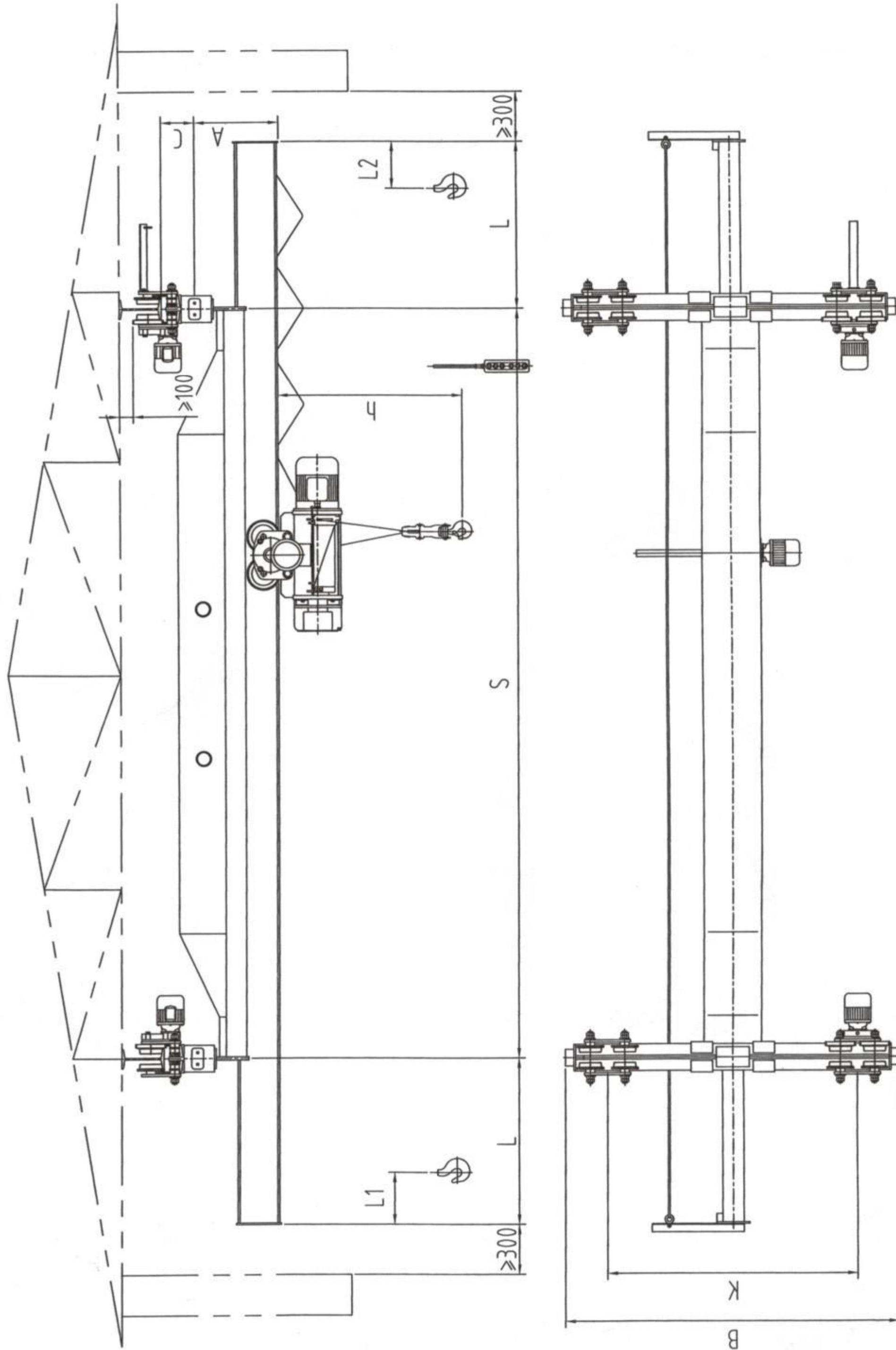


Tel : 0086592-6201319

E-mail : asi aone311@gmail . com

LX型0.5~10t电动单梁悬挂桥式起重机

LX type 0.5 to 10 t electric single-girder suspension bridge crane



LX型5t电动单梁悬挂桥式起重机

LX type 5t electric single-girder suspension bridge crane

技术规格 Technical specifications

		5t																			
起重量	Rated load	5t																			
跨度(m)	Span	3	3.5	4	4.5	5	5.5	6	6.5	7	7.5	8	8.5	9	9.5	10	10.5	11	11.5	12	12.5
起重机总重(kg)	Total weight	1541	1599	1661	1719	1780	1838	1900	1958	2019	2077	2139	2271	2333	2391	2452	2510	2572	2817	2883	2996
最大轮压(kN)	Max wheel load	37.91	37.33	36.95	36.67	36.49	36.36	36.28	36.23	36.22	36.22	36.25	37.18	37.20	37.22	37.26	37.30	37.37	37.90	37.98	38.20
最小轮压(kN)	Min wheel load	3.85	4.00	4.15	4.30	4.45	4.60	4.75	4.89	5.05	5.19	5.35	5.68	5.83	5.98	6.13	6.28	6.43	7.04	7.21	7.49
h(mm)		起升高度不大于9米时, h=1320mm; 起升高度大于9米时h=1383mm; When lifting height is less than 9m, h=1320mm; When lifting height is more than 9m, h=1383mm;																			
A(mm)		485																			
C(mm)		~208																			
L1(mm)		360																			
L2(mm)		150																			
B(mm)		1500																			
K(mm)		1000																			
L(mm)		750																			
		2500																			
		2000																			
		1500																			
		1000																			
		500																			
		250																			
		100																			
		50																			
		25																			
		12.5																			
		6.25																			
		3.125																			
		1.5625																			
		0.78125																			
		0.390625																			
		0.1953125																			
		0.09765625																			
		0.048828125																			
		0.0244140625																			
		0.01220703125																			
		0.006103515625																			
		0.0030517578125																			
		0.00152587890625																			
		0.000762939453125																			
		0.0003814697265625																			
		0.00019073486328125																			
		9.5367431640625e-05																			
		4.76837158203125e-05																			
		2.384185791015625e-05																			
		1.1920928955078125e-05																			
		5.9604644775390625e-06																			
		2.98023223876953125e-06																			
		1.490116119384765625e-06																			
		7.450580596921875e-07																			
		3.7252902984609375e-07																			
		1.86264514923046875e-07																			
		9.31322574615234375e-08																			
		4.656612873076171875e-08																			
		2.3283064365380859375e-08																			
		1.16415321826904296875e-08																			
		5.82076609134521484375e-09																			
		2.910383045672607421875e-09																			
		1.4551915228363037109375e-09																			
		7.2759576141815185546875e-10																			
		3.63797880709075927734375e-10																			
		1.818989403545379638671875e-10																			
		9.094947017726898193359375e-11																			
		4.5474735088634490966796875e-11																			
		2.27373675443172454833984375e-11																			
		1.136868377215862274169921875e-11																			
		5.684341886079311370849609375e-12																			
		2.8421709430396556854248046875e-12																			
		1.42108547151982784271240234375e-12																			
		7.10542735759913921356201171875e-13																			
		3.552713678799569606781005859375e-13																			
		1.7763568393997848033905029296875e-13																			
		8.88178419699892401695251464796875e-14																			
		4.440892098499462008476257323984375e-14																			
		2.2204460492497310042381286619921875e-14																			
		1.11022302462486550211906433099609375e-14																			
		5.55111512312432751059532165498046875e-15																			
		2.775557561562163755297660827490234375e-15																			
		1.3877787807810818776488304137451171875e-15																			
		6.9388939039054093882441520687255859375e-16																			
		3.46944695195270469412207603436279296875e-16																			
		1.734723475976352347061038017181396484375e-16																			
		8.673617379881761735305190085906982421875e-17																			
		4.3368086899408808676525950429534912109375e-17																			
		2.1684043449704404338262975214767456046875e-17																			
		1.08420217248522021691314876073837280234375e-17																			
		5.42101086242610108455657380369186401171875e-18																			
		2.710505431213050542278286901845932005859375e-18																			
		1.3552527156065252711391434509229660029296875e-18																			
		6.7762635780326263556957172546148300146484375e-19																			
		3.38813178901631317784785862730741500732421875e-19																			
		1.694065894508156588923929313653707503662109375e-19																			
		8.47032947254078294461196456826853751831046875e-20																			
		4.2351647362703914723059822841342687591550234375e-20																			
		2.11758236813519573615299114206713437777751171875e-20																			
		1.058791184067597868076495571033567188888805859375e-20																			
		5.293955920337989340382477855167785944444029296875e-21																			
		2.6469779601689946701912389275838929722220146484375e-21																			
		1.32348898008449733509561946379194648611110234375e-21																			
		6.61744490042248667547789731695973243055551171875e-22																			
		3.3087224502112433377389486584798662151777755859375e-22																			
		1.6543612251056216688694743292399331078888777751171875e-22																			
		8.271806125528108344347371646199665539444388888805859375e-23																			
		4.135903062764054172173685823099832769722194444194444029296875e-23																			
		2.0679515313820270860868429115499163848610972220146484375e-23																			
		1.03397576569101354304342145577495819243055551171875e-23																			
		5.169878828455067715217107277874790962151777755859375e-24																			
		2.584939414227533857608553638937395481078888777751171875e-24																			
		1.292469707113766928804276819468697740539444388888805859375e-24																			
		6.462348535568834644021384097343498870269722194444194444029296875e-25																			
		3.2311742677844173220106920486717494401348610972220146484375e-25																			
		1.6155871338922086610053460243358747200670269722194444194444029296875e-25																			
		8.07793566946104330502718012167937360033501348610972220146484375e-26																			
		4.03896783473052165251359006083968680016750670269722194444194444029296875e-26																			
		2.01948391736526082625679503041984340008375033501348610972220146484375e-26																			
		1.009741958682630413128397515209921700041875016750670269722194444194444029296875e-26																			
		5.048709793413152065641987576049608500209375033501348610972220146484375e-27																			
		2.52435489670657603282099378802480425001046875016750670269722194444194444029296875e-27																			
		1.262177448353288016410496894012402125000523375033501348610972220146484375e-27																			
		6.31088724176644008205248447200612010625000261675016750670269722194444194444029296875e-28																			
		3.1554436208832200410262422360030600531250001308375033501348610972220146484375e-28																			
		1.57772181044161002051312111800153000261675016750670269722194444194444029296875e-28																			
		7.888609052208050102565610590007650001308375033501348610972220146484375e-29																			
		3.9443045261040250512828052950038250006541875016750670269722194444194444029296875e-29																			
		1.97215226305201252564140264750191250032709375033501348610972220146484375e-29																			
		9.860761315260062628207013237509562500163546875016750670269722194444194444029296875e-30																			
		4.9303806576300313141035066187547812500817734375033501348610972220146484375e-30																			
		2.4651903288150156570517533093752390625004088671875016750670269722194444194444029296875e-30																			
		1.2325951644075078285278766546875119531250020443359375033501348610972220146484375e-30																			
		6.162975822037539142639383272343755976562500102216796875016750670269722194444194444029296875e-30																			
		3.0814879110187695713196916361718752988281250051108396875033501348610972220146484375e-30																			
		1.54074395550938478565984581808937514941406250025554196875016750670269722194444194444029296875e-30																			
		7.70371977754692392829922409404687574707031250012777096875033501348610972220146484375e-30																			
		3.8518598887734619641496120470234375373535156250063885484375016750670269722194444194444029296875e-30																			
		1.925929944386730982074806023511718751867675781250031942721875033501348610972220146484375e-30																			
		9.629649721933654910374030117558937593383789062500159713609375016750670269722194444194444029296875e-30																			
		4.8148248609668274551870150587796875466918945312500798568046875033501348610972220146484375e-30																			
		2.407412430483413727593507529389843752334594765625003992840234375016750670269722194444194444029296875e-30																			
		1.20370621524170686379675376469492187511672973781250019964201171875033501348610972220146484375e-30																			
		6.01853107622853431898376688234746093755836486906250099821005859375016750670269722194444194444029296875e-30																			
		3.0092655381142671594918834411737304687529182434531250049910529296875033501348610972220146484375e-30																			
		1.5046327690571335797459417205868652343751459121716562500249552646484375016750670269722194444194444029296875e-30																			
		7.5231638452856678987229706029343261718757295608581250012477632324375033501348610972220146484375e-30																			
		3.7615819226428339493614853014671630893753647804290625006238816161875016750670269722194444194444029296875e-30																			
		1.880790961321416974680742650733581544687518239021453125003119408084375033501348610972220146484375e-30																			
		9.403954806607084873440713253667907723437591195107165625001559704041875033501348610972220146484375e-30																			
		4.701977403303542436720356626833953861718754559520358125007798520209375033501348610972220146484375e-30																			
		2.3509887016517712183601783134169769289375227976017906250038992601046875033501348610972220146484375e-30																			
		1.175494350825885609180089156708488464687511398800895312500194963005234375033501348610972220146484375e-30																			
		5.8774717541294280459004457835424423234375569940047165625009748150261675033501348610972220146484375e-30																			
		2.93873587706471402295022289177122116171875284970023581250048740751308375033501348610972220146484375e-30																			
		1.469367938532357011475111445885610580893751424850117906250024370375646875033501348610972220146484375e-30																			
		7.34683969266178505737555722944282544687571242505895312500121851878234375033501348610972220146484375e-30																			
		3.673419846330892528687778614721412723437535621254453125006092594116875033501348610972220146484375e-30																			
		1.8367099231654462643438893073607061718751781062727656250030462970584375033501348610972220146484375e-30																			
		9.1835496158272313217219445368035308937589053136378125001523148529234375033501348610972220146484375e-30																			
		4.591774807913615660860972268401765446875445265681875007615742616875033501348610972220146484375e-30																			
		2.29588740395680783043048613420088272343752226328409375038078713083750335																			

LX型10t电动单梁悬挂桥式起重机

LX type 10t electric single-girder suspension bridge crane

技术规格 Technical specifications

		10t																			
起重量	Rated load	10t																			
跨度(m)	Span	3	3.5	4	4.5	5	5.5	6	6.5	7	7.5	8	8.5	9	9.5	10	10.5	11	11.5	12	12.5
起重机总重(kg)	Total weight	2314	2372	2434	2492	2554	2612	2673	2731	2793	2851	2913	3189	3259	3336	3405	3482	3551	3898	3989	4170
最大轮压(kN)	Max wheel load	63.94	64.08	64.24	64.38	64.54	64.68	64.84	64.98	64.14	65.28	65.44	69.85	69.82	69.84	69.85	69.90	69.95	70.54	70.66	71.01
最小轮压(kN)	Min wheel load	5.79	5.93	6.08	6.23	6.38	6.53	6.68	6.83	6.98	7.13	7.28	8.12	8.29	8.45	8.66	8.86	9.03	9.75	9.97	10.43
h(mm)		1670																			
A(mm)		555																			
C(mm)		~240																			
L1(mm)		500																			
L2(mm)		500																			
B(mm)		1500																			
K(mm)		1000																			
L(mm)		750																			
起重量	Rated load	10t																			
跨度(m)	Span	13	13.5	14	14.5	15	15.5	16	16.5	17	17.5	18	18.5	19	19.5	20	20.5	21	21.5	22	22.5
起重机总重(kg)	Total weight	4260	4342	4433	4581	4675	4758	4852	5161	5255	5753	5856	5945	6048	6139	6975	7080	7200	7306	7427	7532
最大轮压(kN)	Max wheel load	71.14	71.26	71.40	71.70	71.87	72.01	72.18	72.90	73.08	74.27	74.48	74.66	74.87	75.05	77.10	77.33	77.60	77.83	78.10	78.33
最小轮压(kN)	Min wheel load	10.65	10.86	11.08	11.45	11.69	11.89	12.13	12.90	13.14	14.38	14.64	14.86	15.12	15.34	17.45	17.70	18.00	18.20	18.57	18.83
h(mm)		1670																			
A(mm)		650																			
C(mm)		~240																			
L1(mm)		500																			
L2(mm)		500																			
B(mm)		3000																			
K(mm)		2500																			
L(mm)		1000																			

HD型电动单梁起重机

HD Electric single girder over-head crane

s—起重机跨度 crane span

H—起重机运行轨道顶部距起重机最高点的距离

the distance from the crane travel rail top to the crane highest point

h—起升吊钩升到最高点时距起重机运行轨道顶部的距离

the distance to the crane travel rail top when the hook moves to the top point

C1—起重机吊钩距非电控箱一侧大车轨道中心的最小距离

the minimum distance from the crane hook to the crane rail center of the non—electric control box side

C2—起重机吊钩距电控箱一侧大车轨道中心的最小距离

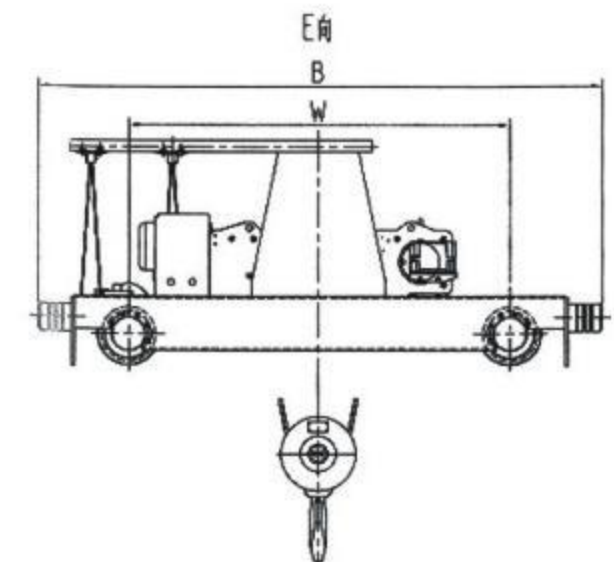
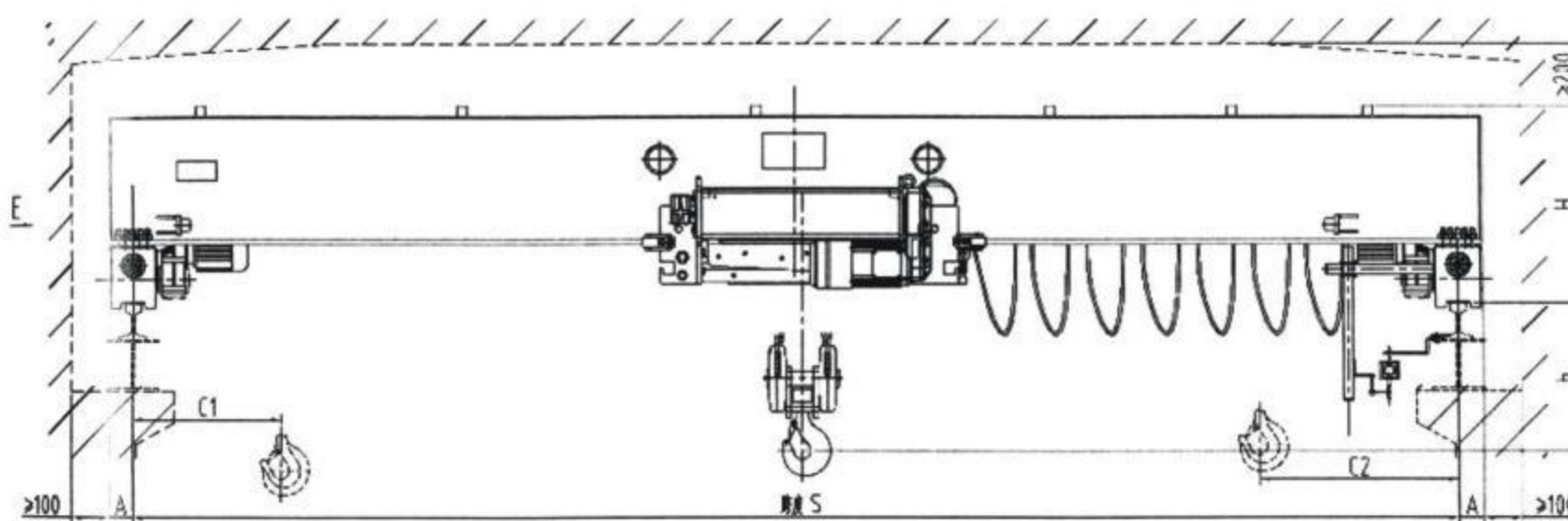
the minimum distance from the crane hook to the crane rail center of the electric control box side

A—大车轨道中心到端梁外侧的距离

the distance from the crane rail center to the end girder outside

W—大车端梁轮距 crane end girder wheel distance

B—大车端梁（含缓冲器）的长度 the length of the crane end girder including the buffer



注 notes:

- 1、大车运行标准速度为3-30m/min（变频调速）；the standard travelling speed of crane is 3-30m/min(frequency conversion)
小车运行标准速度为2-20m/min（变频调速）。the standard travelling speed of trolley is 2-20m/min（frequency conversion）
- 2、除了标准起升速度外还有多种速度可供选择。There are many optional levels and frequency control lifting except the standard speed.
- 3、控制方式有多种：地操操作、遥控器操作及两者的组合。Control methods：ground control，remote control and the combination control of the two.
- 4、表格中数据仅供参考，如有变更，恕不另作通知。The data listed in the form is only for reference. Please forgive the non-informing if the date changed.
- 5、具体事宜或特殊要求请与我公司协商。Please contact us for more details and special requirements.

HD型电动单梁起重机

HD Electric single girder over-head crane

技术规格 Technical specifications

起重量 Capacity (t)	跨度 span (m)	起升高度 Lifting height (m)	工作级别 Working group	起升速度 Lifting speed (m/min)	质量 weight		大车 轨道 Track (推荐)	总功率 power rate (kw)	最大 轮压 max wheel load (kN)	基本尺寸 Dimension (mm)							
					小车 (kg)	大车 (kg)				H	h	C1	C2	A	W	B	
1	7.5	6	A5	0.8/5	405	1700	P24	4.07	8.76	618	354	665	940	100	2500	3174	
	10.5					1932			9.51								
	13.5					2280			10.45								698
	16.5					2704			11.58								768
	19.5					3299		13.06	798								
	22.5					3921		14.62	858								
	25.5					4514		16.1	928								
2	7.5	6	A5	0.8/5	405	1811	P24	4.31	13.5	708	356	665	940	100	2500	3174	
	10.5					2081			14.46								
	13.5					2451			15.54								778
	16.5					3188			17.47								818
	19.5					3773		18.93	888								
	22.5					4344		20.39	968								
	25.5					5141		22.38	988								
3.2	7.5	6	A5	0.8/5	405	1861	P24	4.31	18.96	758	356	665	940	100	2500	3174	
	10.5					2098			20.11								
	13.5					2687			21.85								808
	16.5					3344			23.51								908
	19.5					4121		25.45	948								
	22.5					4745		27.06	1028								
	25.5					6164		30.6	1178								
5	7.5	6	A5	0.8/5	500	2218	P24	7.75	28.2	788	410	665	940	100	2500	3174	
	10.5					2571			29.76								
	13.5					3245			31.8								908
	16.5					3978			33.84								978
	19.5					4633		35.62	1138								
	22.5					6280		39.78	1258								
	25.5					7201		42.62	1288								
10	7.5	6	A5	0.8/5	640	2696	P38	12.1	51.85	908	465	675	1020	100	2500	3174	
	10.5					3200			54.44								
	13.5					4091		12.8	57.7								1008
	16.5					5307			60.83								1208
	19.5					6466			64								1308
	22.5					7694			67.26								1358
	25.5					9309			71.36								1482
12.5	7.5	6	A5	0.66/4	740	3545	P38	12.8	65.8	1025	515	695	1050	120	2500	3174	
	10.5					4201			69.13								
	13.5					5285			72.74								1008
	16.5					7120		13.6	77.76								1208
	19.5					8359			81.24								1308
	22.5					9905			85.35								1358
	25.5					12086			90.94								1482



5~125t 欧式吊钩桥式起重机

E.O.T.Crane with hook Cap.5~125t

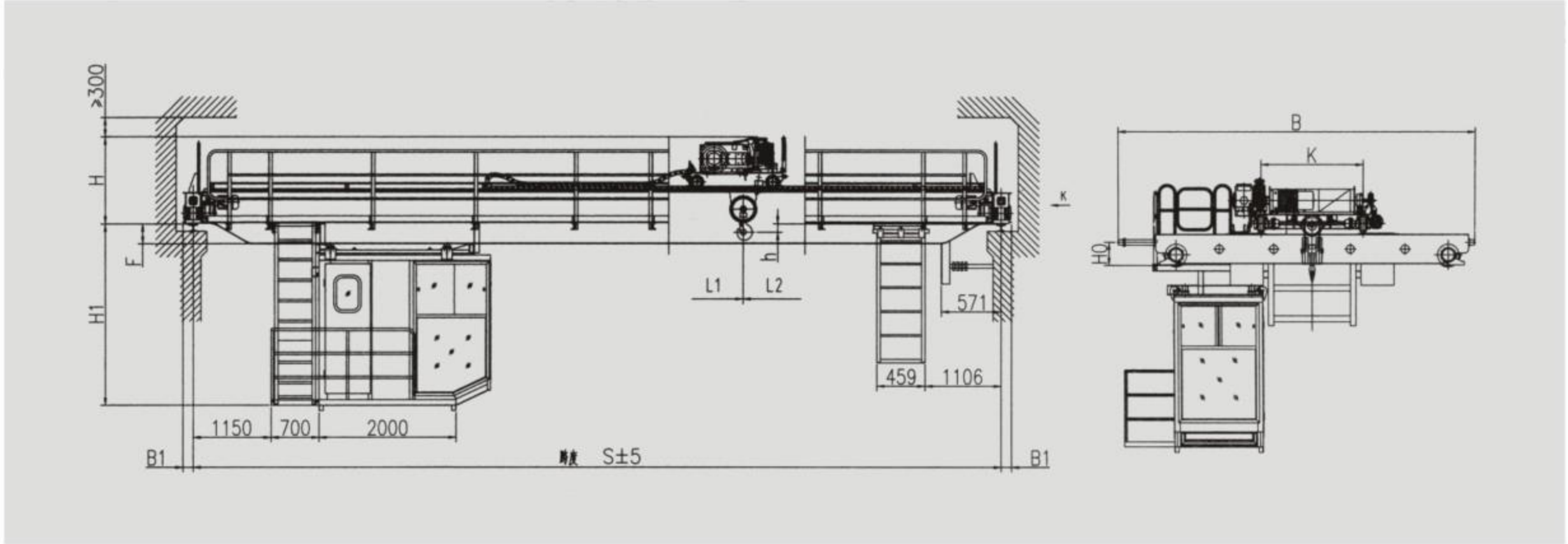
欧式系列吊钩桥式起重机是具备以下优点的新一代起重设备：

- 1.自重轻、轮压小、限界尺寸小、性能可靠、操作方便的起重设备是各种物料搬运场所首选的机型。
- 2.轮压小、界限尺寸小，有利于降低厂房等前期工程投资，同时照明、取暖等设施又能节省一些费用。
- 3.产品性能可靠，经久耐用，会给后期产品在使用过程中所需的附加费用降至最低；
一方面高质量、高性能的零部件的采用使维护、维修工作量减少，
另一方面总装机功率（能耗）有所降低，也是其使用成本得以节约。

European series overhead crane with hook is a new generation crane , it has the following advantages :

- 1.Light dead weight , light wheel load , small boundray dimensions , dependoble performance , easy opertion .
- 2.Light wheel load and small boundary dimensions can reduce the costs of plant construction , save capitol investment of lighting , heating and so on .
- 3.Using high-quality components can reduce failure rate and maintenance costs .
- 4.On the other hand , the total installed power (power consumption) , low consumption of total power can reduce the costs .





5~10t 欧式吊钩桥式起重机

E.O.T. Crane with Hook Cap.5~10t

技术规格 Technical specifications

起重量 Cap	主钩 Main	t	5								10							
	副钩 Auxiliary		--								--							
跨度 Span		m	10.5	13.5	16.5	19.5	22.5	25.5	28.5	31.5	10.5	13.5	16.5	19.5	22.5	25.5	28.5	31.5
起升高度 Lifting Height	主钩 Main		18								18							
	副钩 Auxiliary	--								--								
工作制度 Duty			A5								A5							
速度 Speed	主钩 Main	m/min	1.07~10.7								0.81~8.1							
	副钩 Auxiliary		--								--							
	小车运行 Crab travelling		3~30								3~30							
	大车运行 Trolley travelling		6.8~68								6.8~68							
极限尺寸 Limit dimension	L1	mm	950								970							
	L2		1280								1355							
	L		--								--							
	h		196.5				124.5				434.5				384.5			
	h1		--								--							
主要尺寸 Main dimension	H0	mm	320				340				340							
	H		1206.5				1278.5				1348.5				1398.5			
	H1		2459	2509	2609	2709	2641	2751	2791	2841	2505	2605	2655	2755	2805	2855	2955	3055
	B		5040				5240				5380				5580			
	K		1500								1800							
	B1		150								150							
	F		108	158	258	358	290	390	440	490	140	240	290	390	440	490	590	690
最大轮压 Max.Wheel Loading		kN	48	52	56	60	66	71	78	83	78	83	88	93	100	105	112	119
电机总功率 Power		kw	16.5				18.5				22.1				24.1			
荐用钢轨 Crane Rail Recommended			43kg/m															
电 源 Power Supply			三相交流 3-Phase A.C.50HZ 380V															



5~50t欧式葫芦桥式起重机

5~50 t ou hoist bridge crane

电动葫芦桥式起重机 electric hoist bridge crane

S—起重机跨度 crane span

H—起重机运行轨道顶部距起重机最高点的距离 the distance from the crane travel rail top to the crane highest point

H1—起重机运行轨道顶部距起重机最低点的距离 the distance from the crane travelling rail top lowest point of crane

H2—起升吊钩升到最高点时距起重机运行轨道顶部的距离 the distance to the crane travel rail top when the hook moves to the top point

C1—起重机吊钩距一侧大车轨道中心的最小距离 the minimum distance form the crane hook to one side of the crane rail center

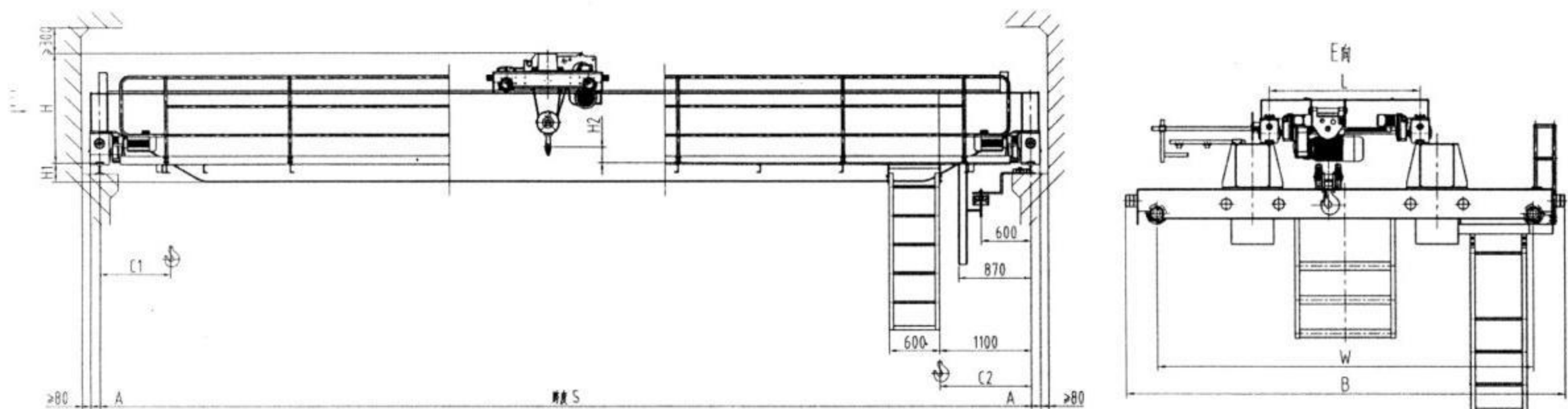
C2—起重机吊钩距另一侧大车轨道中心的最小距离 the minimum distance form the crane hook to the other side of the crane rail center

A—大车轨道中心到端梁外侧的距离 the distance form the crane rail center to the end girder outside

L—小车轨距 trolley rail distance

W—大车端梁轮距 crane end girder wheel distance

B—大车端梁（含缓冲器）的长度 the lenght of the crane end girder including the buffer



注 notes:

1、大车运行标准速度为3~30m/min（变频调速）；

The standard travelling speed of crane is 3~30m/min(frequency conversion)

小车运行标准速度为2~20m/min（变频调速）。

The standard travelling speed of trolley is 2~20m/min（frequency conversion）

2、除了标准起升速度外还有多种速度可供选择，也可选用变频控制起升。

There are many optional levels and frequency control lifting except the standard speed.

3、控制方向有多种：地操操作、遥控器操作、驾驶室操作及任意两者的组合。

Control menthods : ground control , remote control , cab control and either of the two combination .

4、表格中数据仅供参考，如有变更，恕不另作通知。

The data listed in the form is only for reference .Please forgive the non-informing if the date changed .

5、具体事宜或特殊要求请与我公司协商。Please contact us for more details and special requirements.

另注：表格中带“-”标示在大车轨道面以上。Other notes : the mark “-” indicates that it is above the crane rail tread.



Tel : 0086592-6201319

E-mail : asi aone311@gmail . com

5~50t欧式葫芦桥式起重机

5~50 t ou hoist bridge crane

技术规格 Technical specifications

起重量 Capacity (t)	跨度 Span (m)	起升高度 Lifting Height (m)	工作级别 Working group	起升速度 Lifting speed (m/min)	小车速度 Trolley speed	大车速度 Crane speed	最大轮压 Max wheel load (kn)	基本尺寸 Basle dimensions (mm)									
								H	H1	H2	C1	C2	A	L	W	B	
5	10.5	6 9 12	A5	0.66/4 0.8/5 1.0/6.3 1.3/8 1.6/10	2.0~20 3.0~30	3.0~30 4.0~40	35.8	1357	-254	406	852	1100	113	1600	3700	4274	
	38.6						1407	456									
	42.4						1507	96	556								
	45.6						1257		306								
	50.8						1309	358									
	57.8						1359	98	408								
	64.3						1331	126	380								
	69.8							226									
10	10.5	6 9 12	A5	0.66/4 0.8/5 1.0/6.3 1.3/8	2.0~20 3.0~30	3.0~30 4.0~40	60.5	1439	-246	498	852	1100	115	1500	3500	4174	
	64.5						1189	104	248								
	69						1291		350								
	76.3						1233	114	292								
	80.7						1303	144	362								
	85.9							244									
	92.6						1393	254	452								
	100.5						1443	354	502								
16	10.5	6 9 12	A5	0.53/3.4 0.66/4 0.8/5	2.0~20 3.0~30	3.0~30 4.0~40	93	1302	80	234	1235	1250	140	1700	3800	4474	
	99.7						1402	82	334								
	106.8						1552		484								
	114.4						1452	183	384								
	120.8						1502	233	434								
	128.5							333									
	136.1						1575	363	504								
	144.3						1622		554								
20	10.5	6 9 12	A5	0.53/3.4 0.66/4 1.2/4.95	2.0~20 3.0~30	3.0~30 4.0~40	112	1416	82.5	224	1250	1250	140	1800	3850	4584	
	120						1516	324									
	127						1618	426									
	133.4						1518	183	326								
	140.2						1568	235	376								
	74.6							384									
	78.5						434	1250	1250	188					2200	4458	5132
	83.4						1618	534	426	1250					1250	188	2200
32	10.5	6 9 12	A5	0.53/3.4 1.66/4 1.2/4.95	2.0~20 3.0~30	3.0~30 4.0~40	84	1600	-5.5	-281	1500	1500	188	2300	4348	5152	
	88.6						1700	195	-331								
	93.2						1650		247	-279							
	97.7						1702	297	-229								
	102						1752	347	-227								
	107.8						1754	449	-177								
	112.3						1804	529	-157								
	117.6						1824	548									
50	10.5	6 9 12	A5	0.4~2.4 0.53~3.2	2.0~20 3.0~30	3.0~30 4.0~40	136	1813	90	508	1600	1300	188	3300	5358	6312	
	142						1865	92	456								
	149						1967	144	354								
	153							246									
	160						2119	146	202								
	167							298									
	173						2169	348	152								
	180							548									



Tel : 0086592-6201319

E-mail : asi aone311@gmail . com